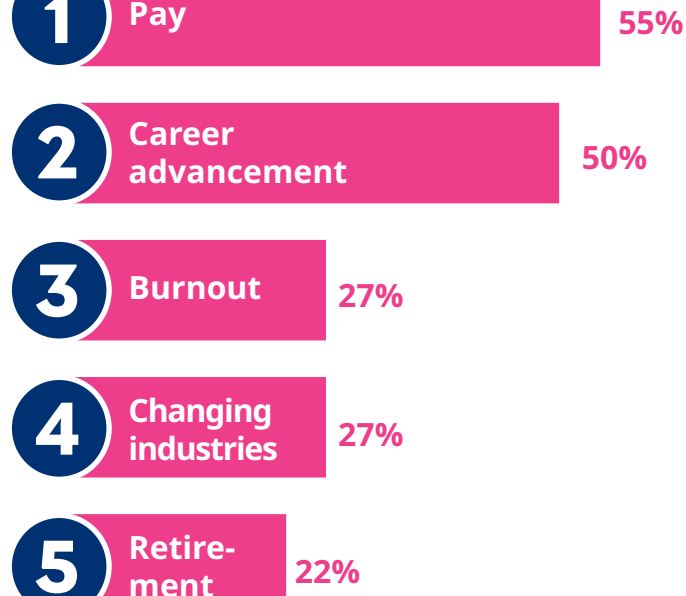


2021 Global pandemic survey a focus on the labour market

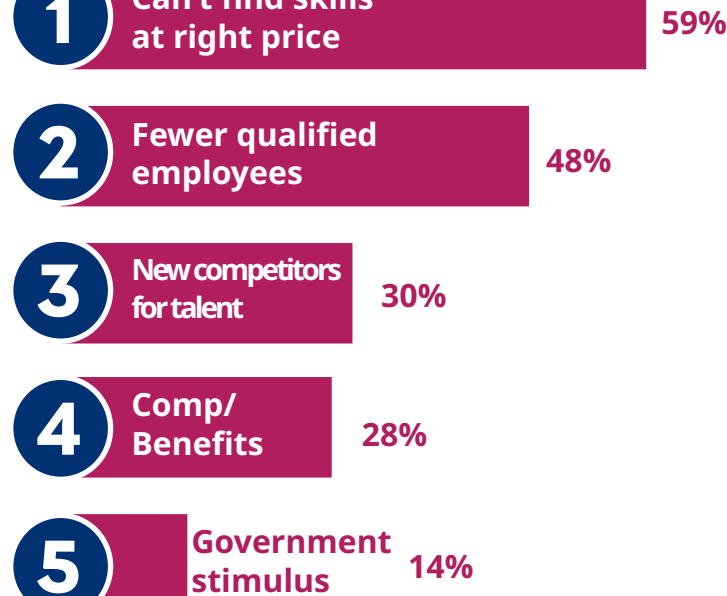
As we adapt to the changing workplace, employee expectations are reshaping the world of work. Mercer's latest Global pandemic survey on labour market challenges and returning to the worksites examines 103 Canadian employers perspectives on attraction and retention, and the actions they are taking to compete for talent.

What's driving the attraction and retention challenges – according to employers?

Voluntary turnover



Attraction challenges



Employers are feeling the pressure – especially with their mid-career professionals and managers

Employers experiencing higher levels of attrition for this segment

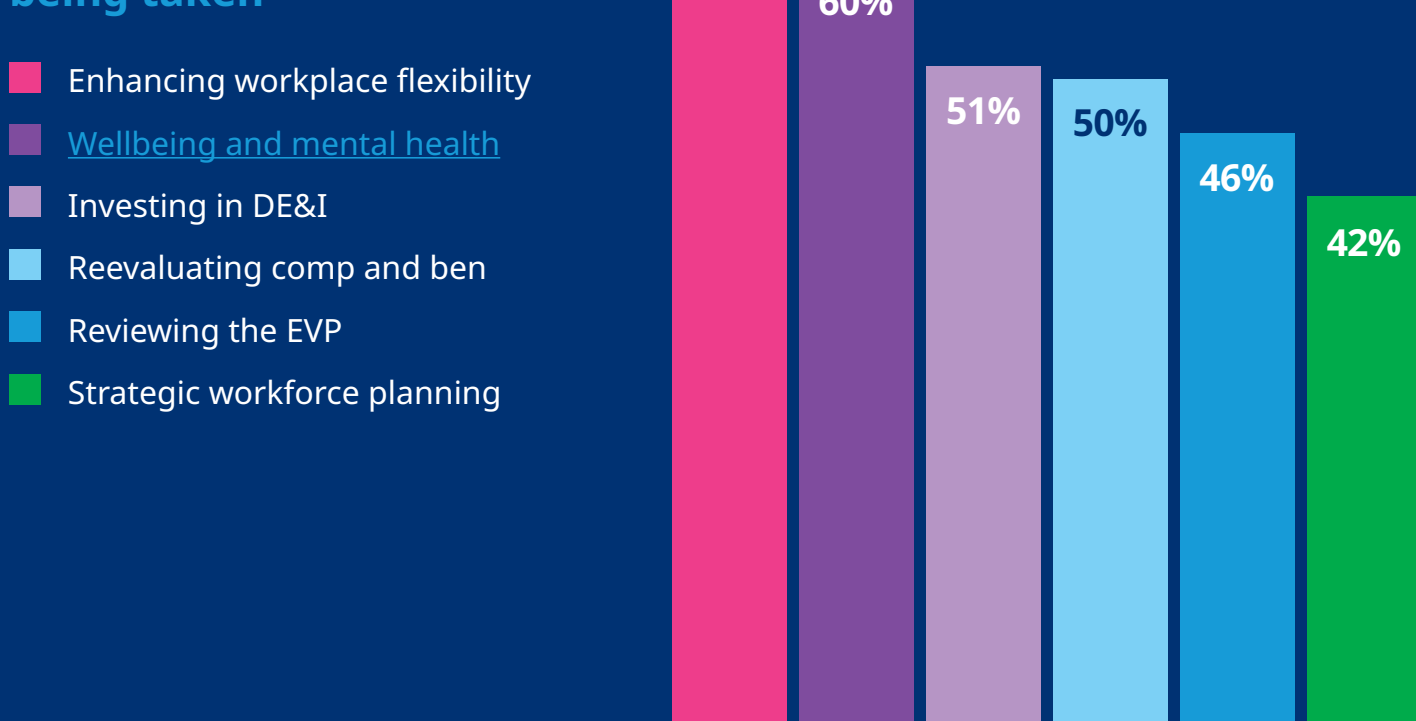


Employers experiencing moderate to significant difficulty recruiting



How are employers responding?

Strategic actions being taken



Financial actions

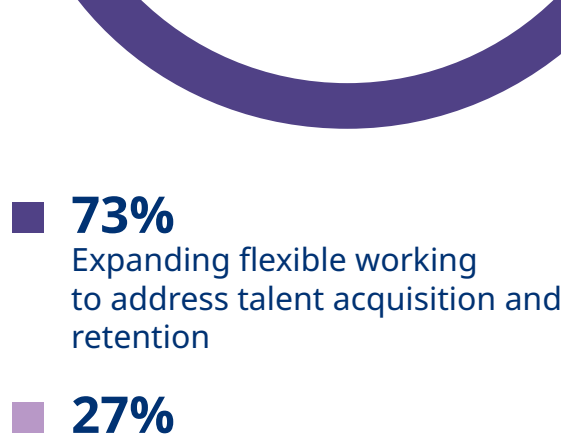
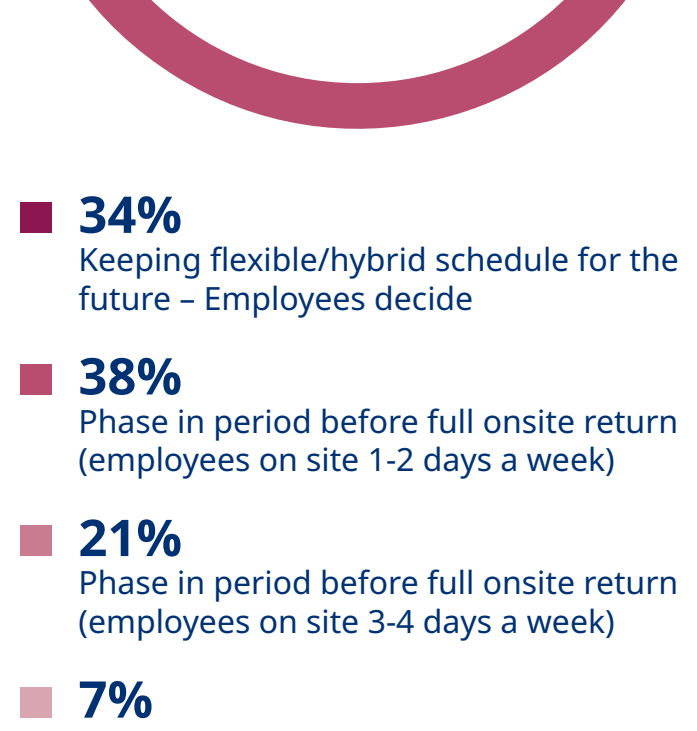
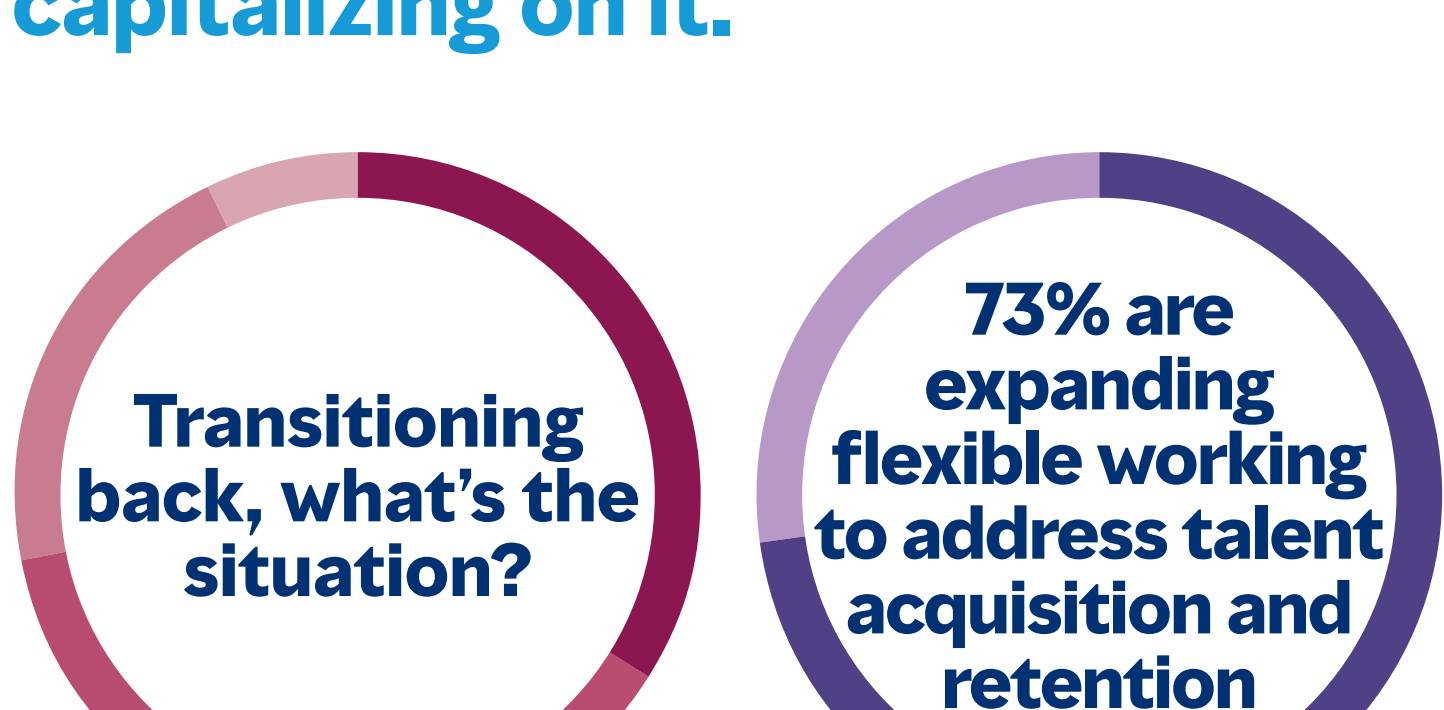
To address talent acquisition



To address retention



Employees value flexibility. It's no coincidence, more companies capitalizing on it.



Seize the opportunity

COVID-19 has changed the way we work forever. It showed employees that another workplace is possible – and economic conditions as the pandemic subsides have given them the power to demand it.

[Contact us](#) today to get started on building your workforce for the future.